



Club Car DS Front Wheel Hub Assembly Installation Instruction

We are striving to build an reliable brand of golf carts parts and accessories.

Hope this manual can assist you to easier install.

For more technical support, please reach us via

Website : www.10101.com

Email : sale_service@10101.com

Facebook : zhong zaiyang

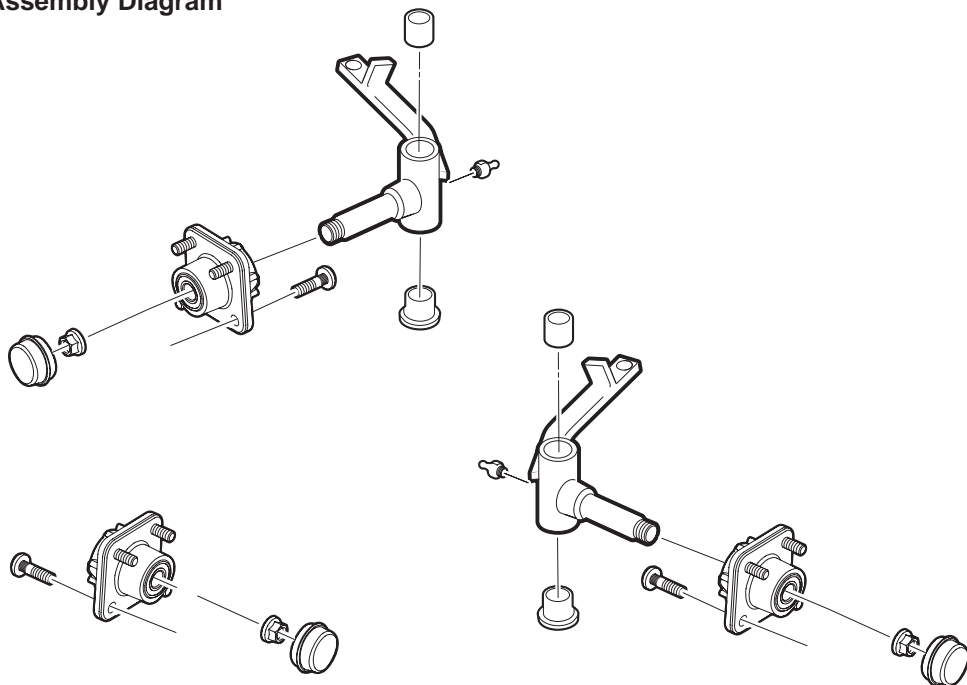
Youtube : 10L0L



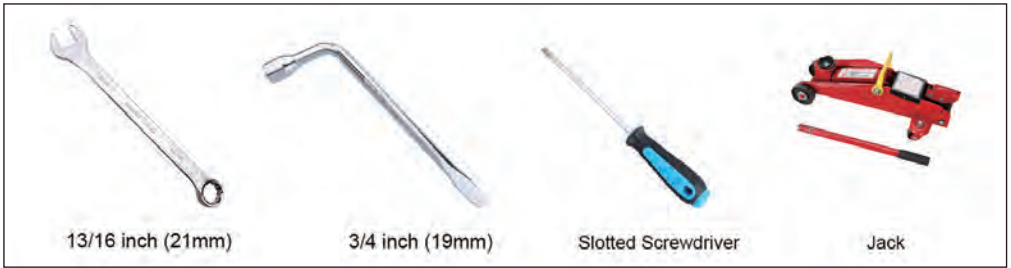
Scan To Get
Installation Video

Contents	Qty	Installation Tools	Qty
Club Car DS Front Wheel Hub.....	1	13/16-inch (21mm) Spanner.....	1
Hub Cap	1	3/4-inch (19mm) Socket.....	1
(See figure 1)		Slotted Screwdriver.....	1
		Jack.....	1

Assembly Diagram



Installation Tools



Installation Steps

1. Park the vehicle on level ground.
2. Turn the key to “OFF” position and remove it from the switch.
3. Make sure the parking brake is set.
4. Loosen the screws of the front wheel with the 3/4-inch (19mm) socket.

(See figure 2)

5. Raise the spring pad of the front leaf spring with the jack to hang the front wheel in the air.

(See figure 3)



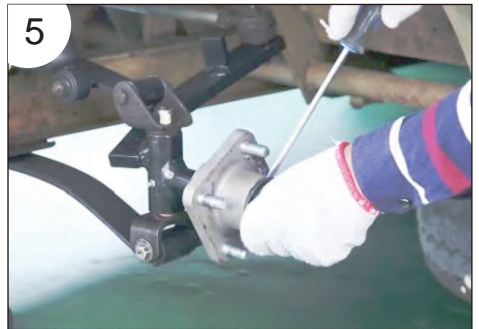
6. Remove the front wheel; then put the wheel under the chassis (in case the jack accidentally leans or slips down)

(See figure 4)



7. Remove the hub cap with the slotted screwdriver.

(See figure 5)



8. Remove the screws of the hub and ball bearing assembly with the 13/16-inch (21mm) spanner, then remove the hub and ball bearing assembly.

(See figure 6)



9. Install a new hub and ball bearing assembly.

(See figure 7)



10. Install the screws of the hub and ball bearing assembly with the 13/16-inch (21mm) spanner.

(See figure 8)



11. Install the hub cap.

(See figure 9)



12. Install the front wheel.

(See figure 10)



13. Install the screws of the front wheel.

(See figure 11)



14. Remove the jack

(See figure 12)



15. Tighten the screws of the front wheel with the 3/4-inch (19mm) socket.

(See figure 13)



This all completes your installation.