

Club Car DS Key Switch Installation Instruction

We are striving to build an reliable brand of golf carts parts and accessories.

Hope this manual can assist you to easier install.

For more technical support, please reach us via

Website : www.10101.com

Email : sale_service@10101.com

Facebook : zhong zaiyang

Youtube : 10L0L

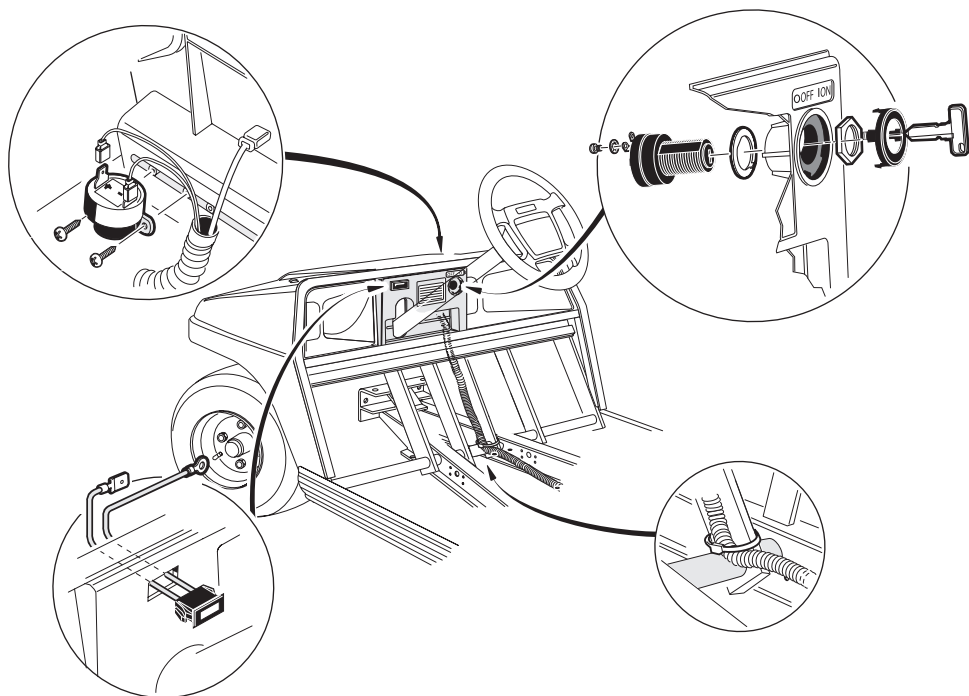


Scan To Get
Installation Video

Contents	Qty	Installation Tools	Qty
Key Switch.....	1	Cross screwdriver.....	1
Club Car DS keys.....	2	Long flat nose pliers.....	1
Screw.....	2		
Washer.....	2		

(See figure 1)

Assembly Diagram



Installation Tools



Long Flat Nose Pliers



Cross Screwdriver

Installation Steps

1. Park the vehicle on level ground.
2. Turn the key to “OFF” position and remove it from the switch.
3. Make sure the parking brake is set.
4. Remove 2 screws on the instrument panel with a cross screwdriver.
(See figure 2)
5. Remove the instrument panel.
(See figure 3)

1



2



3



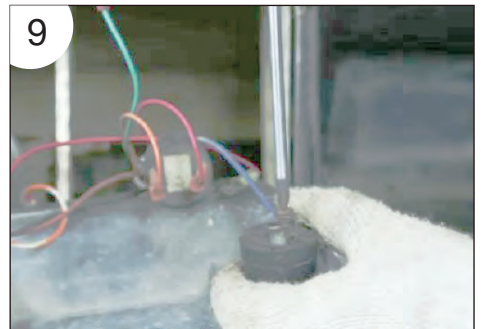
10. Install screws on the key switch with a long flat nose pliers.

(See figure 8)



11. Connect 4 wires with a cross screwdriver. (The blue wire is on the one side; Another 3 wires are on the other side.)

(See figure 9)



12. Install the instrument panel, and tighten 2 screws on the instrument panel with a cross screwdriver.

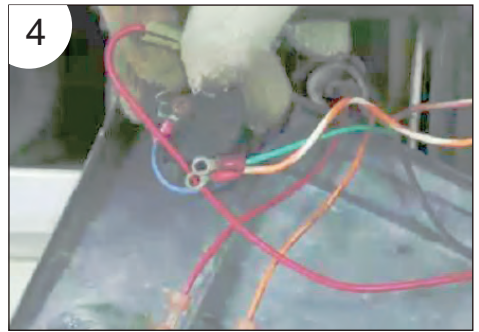
(See figure 10)



This all completes your installation.

6. Disconnect 4 wires with a cross screwdriver.

(See figure 4)



7. Remove screws on the key switch with a long flat nose pliers.

(See figure 5)



8. Remove the key switch.

(See figure 6)



9. Install the new key switch.

(See figure 7)

