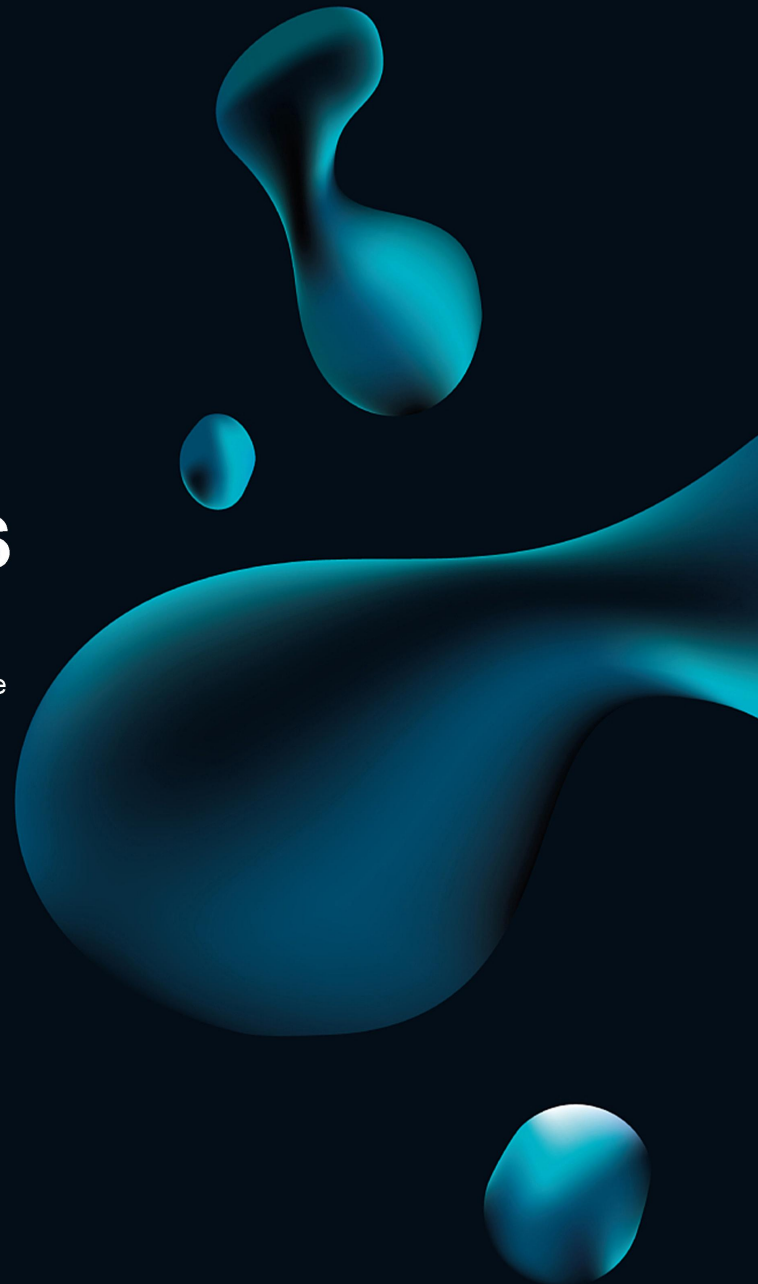


ROYCE ENERGY
CHARGING THE FUTURE, POWERING YOUR TODAY



POWER-WALL SERIES

Series is a type of lithium-ion battery using lithium iron phosphate (LiFePO4) as the cathode material. It can be widely used integrated base stations, marginal stations, home photovoltaic energy storage, distributed power supply and other fields.

Features

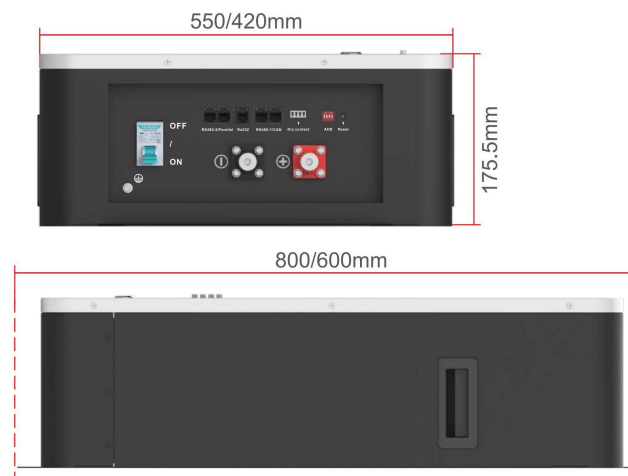
- High cycle life: 6000 cycles(+25°C 0.2C 80% DOD)
- Very long usable life: 5 years warranty, 10 years life design
- Wall-mounted design, space saving.
- Intelligent BMS battery management system
- Communication: RS485/SNMP/Wifi/Bluetooth, Compatible with multi- brand of solar inverter and chargers.
- Comprehensive protection, such as SOC/SOH/ Anti-theft function, etc
- High discharge rate currents, suitable for on-grid or off- grid solar system and other loads.
- Maximum of 16 battery packs can be connected in parallel.

Technical Parameter

MODEL	24-200	48-100	48-200
Specification			
Battery Type	LiFePO4	LiFePO4	LiFePO4
Battery Model	25.6V200AH	51.2V100AH	51.2V200AH
Nominal Capacity(25°C, 0.2C)WH	5120Wh	5120Wh	10240Wh
Adjustable working voltage(Vdc)	22.4 ~ 29.2V	42 ~ 54.8V	42 ~ 54.8V
Folat Charge Voltage(Vdc)	28V	56V	56V
Max.Continuous discharge current(A)	100	100	100
Max. pulse discharge current(A)	150A(1 sec) configurable		
Max.Continuous charge current(A)	100	100	100
Cycle life(25°C 0.2C 80% DOD)	> 6000 Cycles	>6000 Cycles	>6000 Cycles
Cell Equalizer Current(A)	0.1 ~ 5A Max.(optional)	0.1 ~ 5A Max.(optional)	0.1 ~ 5A Max.(optional)
Terminal	M6		
Storage duration	6 months at 25°C		
Safety standard	IEC 62619, UN38.3, MSDS, CE		
Communication function	RS232/RS485/CAN(Standard), SNMP/Wifi/Bluetooth/Dry contact(Optional)		
Protection	Overcharge protection\Overdischarge protection\Overcurrent protection\ Shortcircuit protection\Overtemperature protection		
Ambient Noise(dB)	<40dB(1 meter)		
Working temperature	- 20°C ~ +60°C		
Humidity	0 ~ 95%(no condensation)		
Altitude(m)	<3000		
Dimension			
W*H*D(product size)mm	W420*H600*D175.5		W550*H800*D175.5
W*H*D (package size)mm	W505*H730*D359		W654*H980*D373
Net Weight(Kg)	48		84
Gross Weight(Kg)	63		104

Product specifications are subject to change without notice.

Drawing



When it comes to reliability, our lithium batteries won't let you down. Get in touch with your local distributor. Visit www.lithiumbatts.com or talk to one of our Certified ROYCE ENERGY.

Email us: sales@royce-energy.com