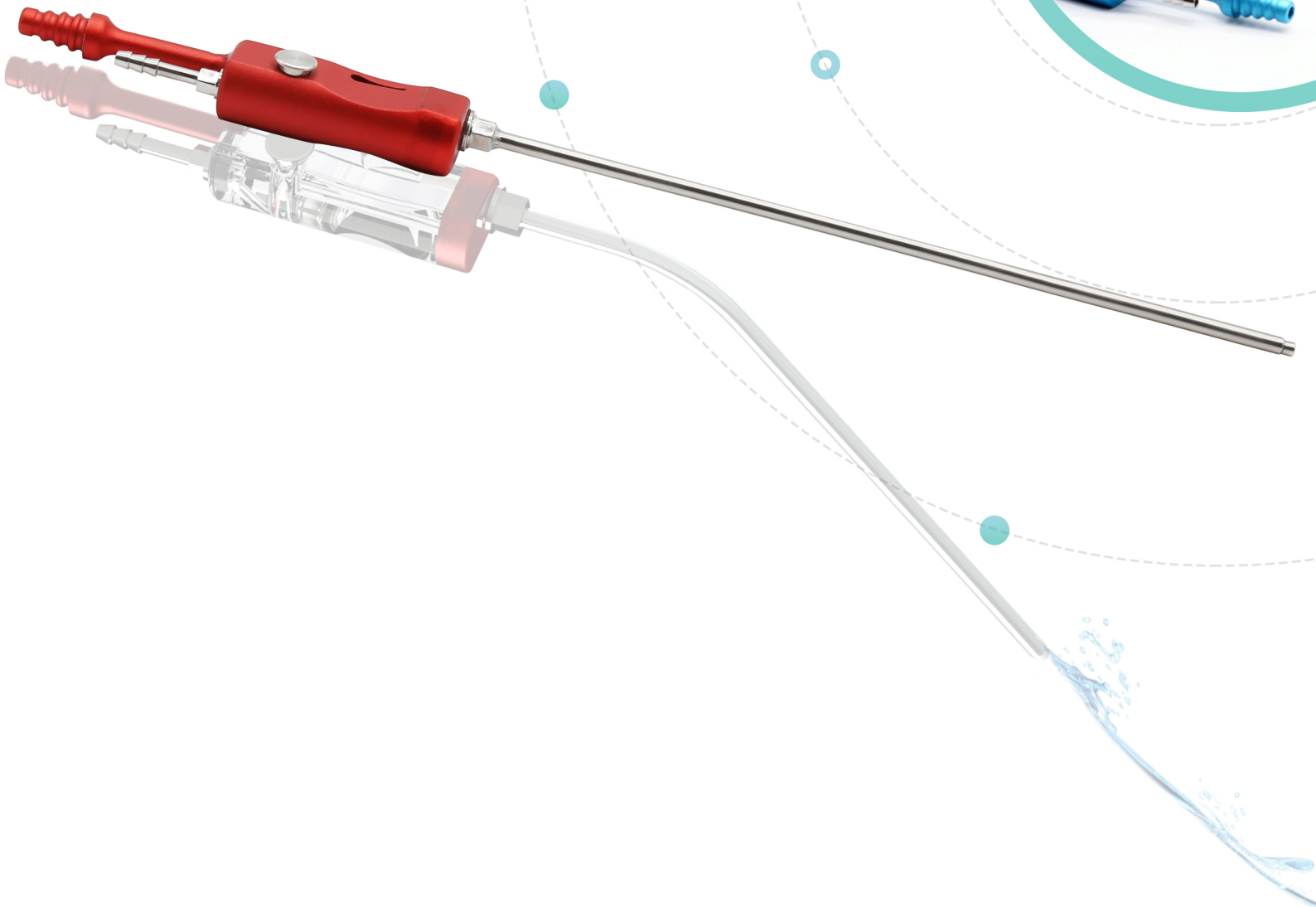


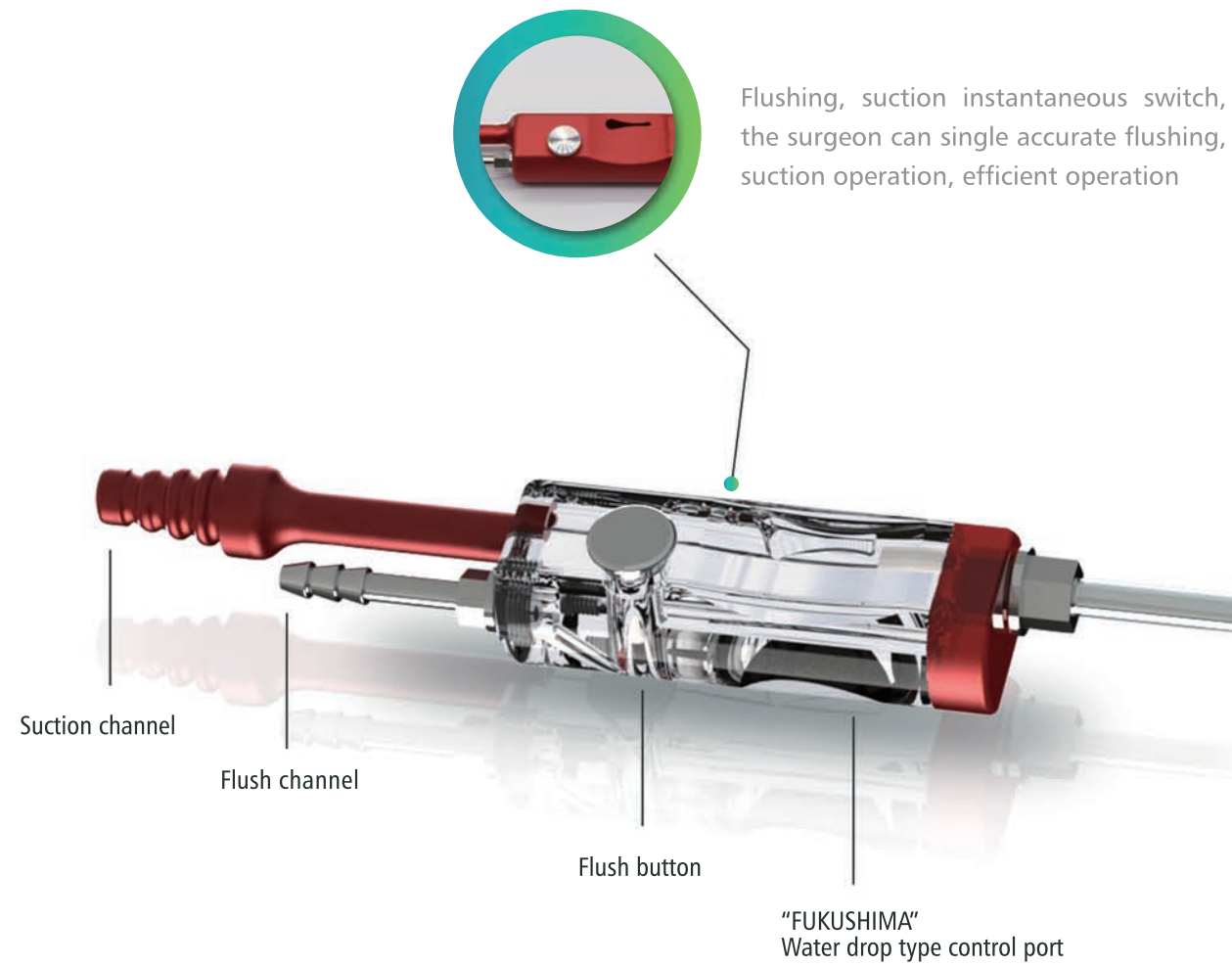
Hotry[®]



Suction & Irrigation Systems

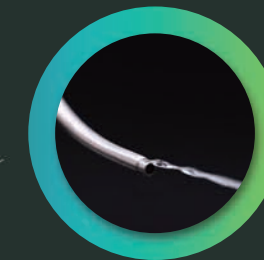
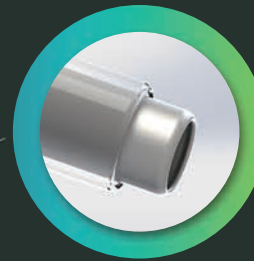
Clean operating environment





Flushing, suction instantaneous switch, the surgeon can single accurate flushing, suction operation, efficient operation

Coaxial design with dual channels of flushing/suction to avoid reflux of the suction tissue; In addition, accurate flushing and suction operations can be carried out in a narrow space to ensure a clean surgical field



Flushing point is located in the suction end of a single point, easy to achieve accurate flushing operation; And the flushing pressure can be adjusted (the maximum pressure can break the bone residue, the small pressure can safely wet the small blood vessels)

1 Ensure the surgical field of vision is clean

Rinsing and suction at the same time to ensure that the operative field is always clean and bleeding points are found, to avoid electrocoagulation and blind burning damage to the tissue.

2 Improve surgical efficiency

One-hand flushing/suction instantaneous switching operation, no need for multiple cooperation and instrument replacement. It greatly improves the operation space and time efficiency.

3 Multi-specification working end

For endoscopic and microscopic design of multiple specifications of the working end. Shallow, deep and narrow space can be perfectly operated.

A variety of diameters and microscopic/endoscopic dedicated working end options

Attractive head end closure protection design

Suction & Irrigation Systems

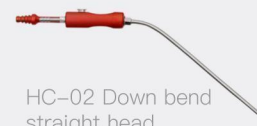
(A variety of configurations to choose from)

Surgery under the Endoscopic:

No.	Specification	Description
HC-01 (180, φ3)	Straight head	Diameter :3mm Length of working end :180mm
HC-01 (180, φ4)	Straight head	Diameter :4mm Length of working end :180mm
HC-02 (180, φ2)	Down bend straight head	Diameter :2mm Length of working end :180mm
HC-02 (180, φ3)	Down bend straight head	Diameter :3mm Length of working end :180mm
HC-02 (180, φ4)	Down bend straight head	Diameter :4mm Length of working end :180mm
HC-03 (180, φ2)	Straight down bend	Diameter :2mm Length of working end :180mm
HC-03 (180, φ3)	Straight down bend	Diameter :3mm Length of working end :180mm
HC-03 (180, φ4)	Straight down bend	Diameter :4mm Length of working end :180mm
HC-04 (180, φ2)	Straight down bend	Diameter :2mm Length of working end :180mm
HC-04 (180, φ3)	Straight down bend	Diameter :3mm Length of working end :180mm
HC-04 (180, φ4)	Straight down bend	Diameter :4mm Length of working end :180mm
HC-05 (180, φ3)	Bayonet left upward bend	Diameter :3mm Length of working end :180mm
HC-06 (180, φ3)	bayonet right upward bend	Diameter :3mm Length of working end :180mm
HC-07 (180, φ3)	bayonet left down bend	Diameter :3mm Length of working end :180mm
HC-08 (180, φ3)	bayonet right down bend	Diameter :3mm Length of working end :180mm



HC-01 Straight head



HC-02 Down bend straight head

Surgery under the Microscope:

No.	Specification	Description
HC-01 (150, φ1.5)	Straight head	Diameter :1.5mm Length of working end :150mm
HC-01 (150, φ2)	Straight head	Diameter :2mm Length of working end :150mm
HC-01 (150, φ2)	Straight head	Diameter :3mm Length of working end :150mm
HC-01 (150, φ4)	Straight head	Diameter :4mm Length of working end :150mm
HC-01 (150, φ5)	Straight head	Diameter :5mm Length of working end :150mm
HC-02 (150, φ1.5)	Down bend straight head	Diameter :1.5mm Length of working end :150mm
HC-02 (150, φ2)	Down bend straight head	Diameter :2mm Length of working end :150mm
HC-02 (150, φ3)	Down bend straight head	Diameter :3mm Length of working end :150mm
HC-02 (150, φ4)	Down bend straight head	Diameter :4mm Length of working end :150mm
HC-03 (150, φ1.5)	Straight down bend	Diameter :1.5mm Length of working end :150mm
HC-03 (150, φ2)	Straight down bend	Diameter :2mm Length of working end :150mm



HC-03 Straight down bend



HC-04 bayonet upward bend