

Radiolucent Cranial Stabilization System

Design for CT, DSA, MRI, Fluoroscopy



“

The system have a “metal-free” option, plus the synthetic Sapphire-Carbon composite skull pin, could meet the requirement in MRI room and provide a good control on minimal imaging artifact.

”



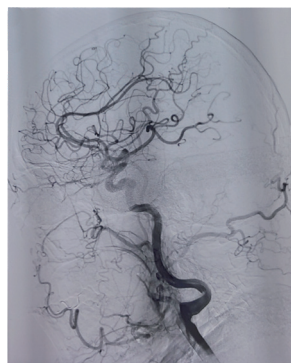
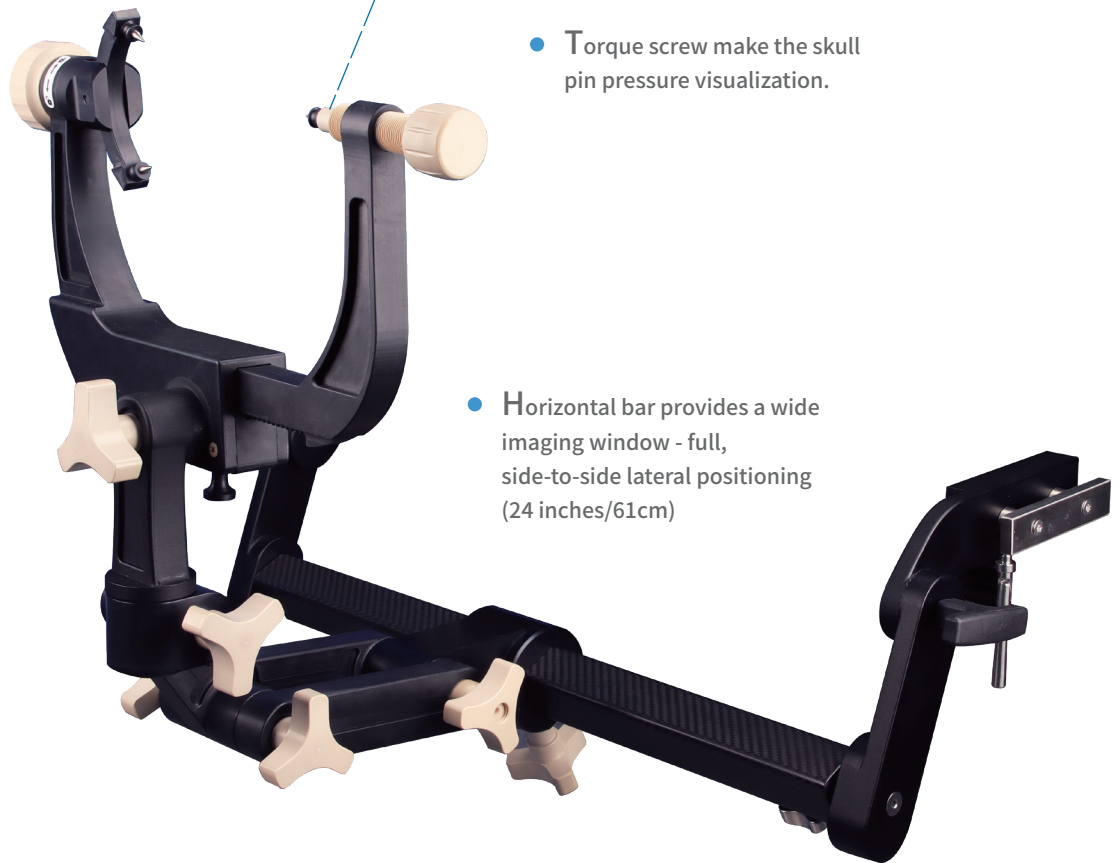
- Stable, high-precision 3-point fixation of the head during surgery.

- Torque screw make the skull pin pressure visualization.

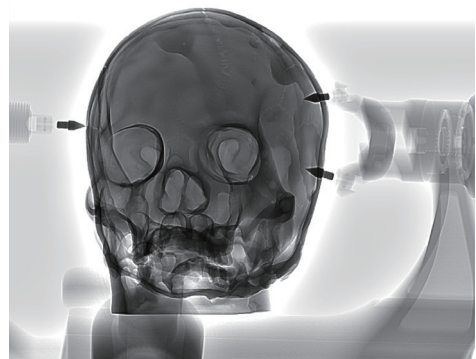
- Suitable both for children and adults.

- Easy fixation and best view.
- Fixation of patient in prone, supine, lateral

- Horizontal bar provides a wide imaging window - full, side-to-side lateral positioning (24 inches/61cm)



DSA image
Radiolucent Skull Clamp in use



Skull Clamp
under Fluoroscopy version

Accessories



Head Clamp

Pressure visualized.
Easy lock dual pin holder.
Whole material is metal free.

Swivel Adaptor

Adjustable on both horizontal and vertical planes.
Whole material is metal free.



Transitional Member

Length 20cm.
Make more distance between base unit and swivel adaptor.
Use with extension member HA84116.
Whole material is metal free.

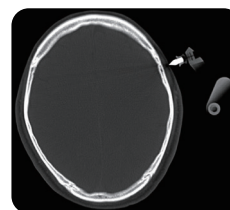
Extension Member

Length 15cm.
Used when need more length of base and more Angle adjustment range.
Use with 20cm transitional member HA84026.
Whole material is metal free.



Radiolucent Skull Pins

Titanium pin tip plus composite material base,
good imaging performance.



Under CT version

Base Unit

Universal table clamp,
could match with both US&Europe model side rail.
Adjustable on width, pitch angle.
Table clamp part is aluminum and stainless steel,
others metal free.





Headrest & Traction

Whole material is metal free.
Gel pad provide good hemodynamic performance.

Transitional Member

Length 15cm.
Used when no request on the extension distance.



Sterilizing Container (for Skull Pins)

Made of polymer material.
Protect the pins tip when sterilizing.



The standard fixation with OT table



Could provide connect solution for different DSA table



Radiolucent Headrest
Traction System

Hotry (Beijing) Co.,Ltd.

HOTRY Medical, 3rd Floor, Building 21, LIANDONGU VAL-
LEY, No.50 Huatuo Road, Daxing District, Beijing,China

Tel: +86 15600753360

E-mail:hotrypeak@gmail.com

www.Hotryneuro.com