

NEUROSURGERY LABORATORY SOLUTIONS

Neurosurgery Laboratory Solutions
Soluciones de laboratorio de neurocirugía
Solutions de laboratoire de neurochirurgie


Contents

Part 1 SKILL TRAINING FOR NEUROSURGERY

- 04 Microscopic Anastomosis Trainer
 - 05 Microscopic Anastomosis Training Module
 - 07 Microscopic Anastomosis Instruments
 - 09 Training Endoscopy System
 - 10 Endoscopy Training Modules
 - 11 Endoscopy Training Instruments
 - 12 Training Grinding Drill System
-

Part 2 ANATOMY LABORATORY EQUIPMENT

- 14 Integrated Laboratory Comprehensive Table
 - 15 Integrated Laboratory Comprehensive Table 2.0
 - 19 Specimen Anatomy Fixing Table
 - 20 Naked Eye 3D Exoscope System
 - 21 Anatomy Endoscopy Systems
 - 22 Floor-Standing Dissecting Microscopes
 - 23 Desktop Dissecting Microscopes
 - 24 Anatomy Drill System
-

A close-up photograph of a surgeon's hands, wearing white gloves, performing a delicate surgical procedure. The surgeon is using a pair of forceps and a fine surgical instrument to work on a specimen held in a glass dish. The scene is illuminated by a bright surgical light, and a microscope is visible in the upper left corner, providing magnification for the procedure. The background is dark, emphasizing the surgical field.

Skill Training for Neurosurgery
神经外科技能训练
Capacitación en neurocirugía
Formation en neurochirurgie



Specifically designed for neurosurgeon anastomosis training

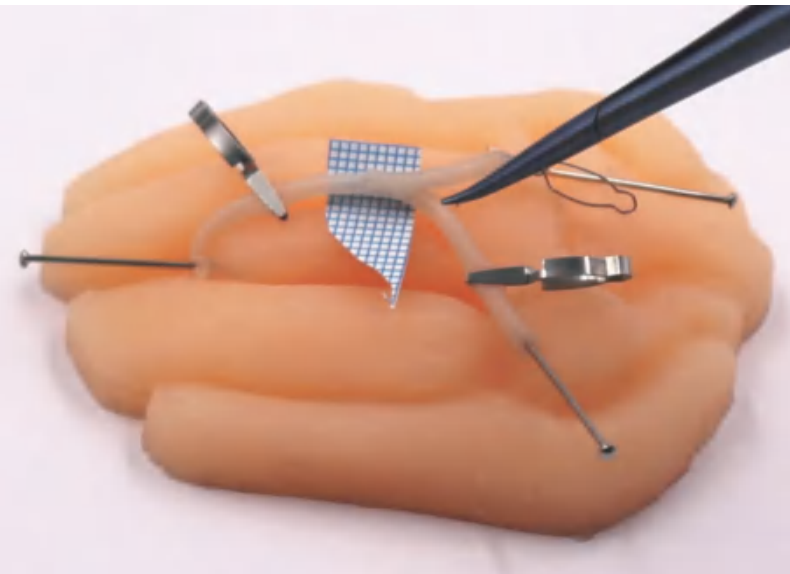
Microscopic Anastomosis Trainer

	Model	Description
Optical System	MT-1	Trinocular stereo microscope, 7-45 times continuous zoom
Deep Anastomosis Objective		Fordeep anastomosis training, working distance 140mm~180mm
CCD Image Recording System		HD video recording system, can be connected to computer, monitor
Skull Base Training Space		4 layers of adjustable depth to simulate cranial space, with flannel anastomosis platform and anatomical fixation platform
Baseplate and Handrest		350mm*300mm aluminum alloy base, with double universal hand rest
24 Inch Monitor	H-NTXSQ	24-inch high-definition monitor

Microscopic Simulation Vascular Card

Specifically designed for neurosurgeon anastomosis training

Model	H-NXG01
Description	Cerebrovascular texture, each card contains Φ 1mm*2, Φ 2mm * 3, which can be reused many times



Microscopic Anastomosis Training Simulation Base

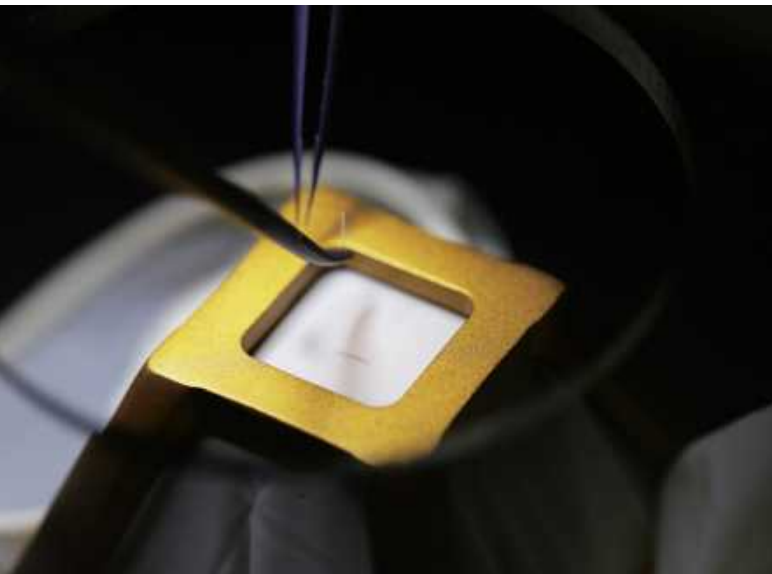
Microscopic anastomosis training under the touch of real brain parenchyma

Model	H-NSZ01
Description	Brain parenchyma texture, length and width of 80mm*70mm, with blood vessel clips for training

Gauze Anastomosis Training Ring

Quick knot and untangle training on gauze

Model	H-NTSBH
Description	Forgauze, glove sewing training, double loop structure, stainless steel



Pharaoh's Five Faces Training Tower

Can practice multi-angle, different depth microscopic anastomosis training

Model	H-FL01
Description	Combined with gloves or gauze, it can do plane, slope fit and knot training, aluminum alloy material

“Shallow layer” Bypass Set



Micro anastomosis – Straight Scissors

Model	HC-S-001 A01
Description	Straight scissors, stainless steel, total length 160mm



Micro anastomosis – Curved Scissors

Model	HC-S-001 A02
Description	Uppertip scissors, stainless steel, total length 160mm



Micro anastomosis – Needle Holder

Model	HC-N-001T A02
Description	Micro needle holder, titanium alloy total length 160mm



Micro anastomosis – Straight Forcep

Model	HC-T-001T A01
Description	Straight tip, titanium, total length 160mm

“Deep layer” Bypass Set



Micro anastomosis – Straight Scissors

Model	HC-S-001T B01
Description	Bayonet, Stright tip, Titanium, Length 216mm



Micro anastomosis – Curved Scissors

Model	HC-S-001T B02
Description	Bayonet, Upward tip, Titanium, Length 216mm



Micro anastomosis – Needle Holder

Model	HC-N-001T B02
Description	Needle holder, Bayonet, Titanium, Length 216mm



Micro anastomosis – Straight Forcep

Model	HC-T-001T C01
Description	Stright tip, Titanium, Length 190mm



Micro anastomosis – Curved Forcep

Model	HC-T-001T C02
Description	Upward tip, Titanium, Length 190mm



Quickly master a variety of surgical manipulation skills under the endoscope

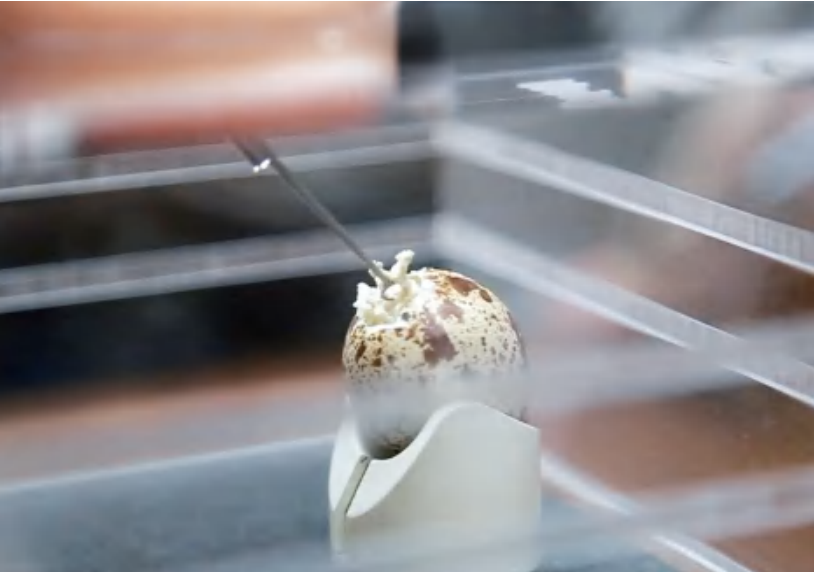
Training Endoscopy System

	Model	Description
HD Endoscopic Camera System	NT-1	1080P high-definition CMOS; can be connected to computer, monitor
Portable LED Light Source		Three-level brightness adjustable; USB powered
0° Training Endoscope		175mm; Φ4mm; viewing angle 0°
Endoscope Fixed Arm		Three-section universal scope arm; need to be used with the base plate and hand rest
Nasal Channel Simulation Space		Restore the real nasal cavity operation space; it needs to be used in conjunction with the skull base training space
Skull Base Training Space		4 layers of adjustable depth to simulate cranial space, with flannel anastomosis platform and anatomical fixation platform
Baseplate And Handrest		350mm*300mm aluminum alloy base, with double universal hand rest
24 Inch Monitor	H-NTXSQ	24-inch HD display

Gauze Anastomosis Training Ring

Training for simulated dural anastomosis on medical gloves

Model	H-NTSBH
Description	Used for suture training of gauze and gloves under microscope, double loop structure, stainless steel



Training Egg Tray Holder

Fixing quail eggs to simulate tumor treatment training

Model	H-XDT
Description	For fixing Quail eggs for easy training, 33mm diameter



The 5 most commonly used training instruments under endoscopy

5-Piece Set Of Training Instruments

Model	Description
H-D96001	Ring handle bayonet grasping forceps, straight head, pointed round head, stainless steel, working end length 185mm
H-D96002	Ring handle bayonet grasping forceps, Upward bend, pointed round head, stainless steel, working end length 185mm
H-D96003	Ring handle bayonet scissors, Upward bend, stainless steel, working end length 185mm
H-D0001R	Straight, leaf-like head end, head end width 1.8mm, working end length 140mm, total length 240mm
H-C0001R	Straight Ring Curettes, 50° Bend Ring, No blade, tip diameter 3mm, overall length 240mm



Easy to start grinding skills training

Training Grinding Drill system

	Model	Description
Host System	DL-1	Speed: 35000RPM/MIN; Power: 65W; Maximum torque: 280gf-cm; Control box use: 220V/230V/2A
Control Pedal		Foot & Manual Dual Mode, Foot Switch IPX Waterproof
Grinding Handle		Handle Weight: 200g
Grinding Head		3mm grinding head X3, 2mm grinding head X3
Egg Holder (Small)	H-XDT	For fixing quail eggs for easy training, 33mm diameter
Egg Holder (Big)	H-DDT	For fixing eggs for easy training, 55mm diameter

Anatomy Lab Equipment
解剖实验室设备
Equipo de laboratorio de anatomía
Équipement de laboratoire d'anatomie





Meet laboratory endoscopy, microscope, dual scope combined dissection operation

All-in-one Laboratory Comprehensive Table

	Model	Description
L-shaped Space Design	SYZ-02	It can be single or double spliced; at the same time, the space cooperation between the floor microscope and the assistant's position is guaranteed
Built-in Fresh Air System		It can filter grinding dust, odor, electrocondensation gasification etc. into clean air in time
Built-in Waterway System		It can be connected to the hospital infrastructure pipeline; it can also store waste water and dump it at any time
Built-in Suction System		Create a storage space for the suction equipment, and internalize the wiring of the suction tube
Built-in bedside track		Auxiliary devices such as scope arm, retractor, etc. can be connected
Comes with Instrument Tray		Instrument trays can be removed directly for cleaning or sterilization operations
Specimen Dissection Pool		Length 390mm* Width 390mm * Depth 110mm

Anatomy Lab Equipment
解剖实验室设备
Equipo de laboratorio de anatomía
Équipement de laboratoire d'anatomie

HOTRY Anaotmy Table 2.0

Integrated Design

IntegratetheMicroscopesystem, Endoscopesystem, Light-source system, Drillingsystemintothe dissecting table...

The control area can be used to control all equipment.

Rich auxiliary functions

IntegratetheMicroscopesystem, Endoscopesystem, Light-source system, Drillingsystemintothe dissecting table...

The control area can be used to control all equipment.



Anatomy Lab Equipment
解剖实验室设备
Equipo de laboratorio de anatomía
Équipement de laboratoire d'anatomie



The left side is the endoscope system jack to connecting endoscope camera and light source guide beam.

Side instrument track, used to place auxiliary instruments such as hold arms.

The right side is the drill system jack to connect the craniotomy handle, drill handle, and foot control system.

Anatomy Lab Equipment
解剖实验室设备
Equipo de laboratorio de anatomía
Équipement de laboratoire d'anatomie

3840*2160P Screen

Can simultaneously display the images of endoscope and microscope, or other input signals (such as own computer...)

Fresh air system

Filter odors from dissection into fresh air





The specimen operation pit is equipped with a specimen holder, has a drainage channel and a suction tube channel, and has side openings to absorb odors and dust.

Four instrument trays can respectively place endoscopic instruments, microscope instruments, ordinary instruments, and grinding heads.



Specimen Anatomy Fixing Table

	Model	Description
Specimen Anatomy Fixing Table	JP-T	The diameter of the rotating base is 270mm; it can be adjusted 360° universally; Fixed needle height adjustable, up to 240mm; stainless steel
Flexible Shaft Retractor	HC-QK	Length 250mm; Strength can be adjusted; Stainless Steel



Bringing technical innovation to micromanipulation

Glasses-free 3D Exoscope System

	Model	Description
Optical Zoom System	EXO-G4	ZOO Mcontinuous zoom system; total magnification: 2.6X ~ 23.3X. Continuously adjustable field of view diameter (large objective lens focal lengthf=250mm): 9.8mm ~ 62.5mm
Ultra-Zoom Objective System		Zoomrange WD180-460mm, super large depth of field
3D Image Module		Resolution 3840*2160; Dual-channel micro HDMI
Glasses-free 3D intelligent display system		28 inches; resolution 3840*2160; human eye tracking locking technology
Built-in Video Recording System		Built-in4K/3D imaging system, 3840*2160 30fps; instant playback function; one-key shooting function
Light Source System		Medical-grade LED light source, with continuously adjustable brightness; minimum illumination on the object surface>50000lx; illumination spot diameter 60mm; illumination color temperature: 5500K; illumination color index (Ra): 85
Bracket System		Maximum arm span 1390mm (customizable length)



Anatomical Endoscopy System

Model	Description
EN-9122	Built-in camera system, LED cold light system, 22-inch high-definition monitor. The whole machine adopts IPX8 level splash-proof protection design Effective resolution: 1920*1080P (60HZ) full HD Video direct recording: USB1080P HD direct recording HD output: HDMI, HD digital output combination Zoom mode: optical zoom LED cold light source: 80W, light source intensity 5 million Lux

HD Endoscope

Model	Description
H-NTN00	Φ4mm; total length 175mm; 0° viewing angle
H-NTN30	Φ4mm; total length 175mm; 30° viewing angle



Floor-standing Dissection Microscope

	Model	Description
Optical Zoom System	MT-3000E	6-speed zoom; total magnification: 2.7X/4X/6.1X/9.6X/16X/24X. Field of view diameter (large objective lens focal length f=250 mm): 9mm/14mm/22mm/37mm/56mm/83mm
Eyepiece		0-210° continuous adjustable angle binocular tube; large field of view and high eye point eyepiece for a larger field of view
Zoom Objective		Zoom range WD180mm~460mm, large depth of field objective lens
Light Source System		Medical-grade LED light source with continuously adjustable brightness; working life 60,000 hours; minimum illumination on the object surface >50,000 lx; illumination spot diameter: 85mm; illumination color temperature: 5500K; illumination color index (Ra): 90%
Video Recording System		Built-in 4K imaging system, 3840*2160 30fps; instant playback function; one-key shooting function 23.5 inch HD monitor
Monitor		23.5 inch HD monitor
Bracket System		Floor stand system (including column and base), the maximum net arm span is 1390mm (customized length)
Optical Zoom System	MT-4000E	ZOOM continuous zoom system; total magnification: 3.6 x~ 23.3 x Field of view diameter (large objective lens focal length f=250mm) 9.7 ~ 132mm
Eyepiece		0-210° continuous adjustable angle binocular tube; large field of view and high eye point eyepiece for a larger field of view
Zoom Objective		Zoom range WD 200mm ~ 550mm, large depth of field objective lens
Light Source System		Medical-grade LED light source with continuously adjustable brightness; working life 60,000 hours; minimum illumination on the object surface > 50,000lx; illumination spot diameter: 85mm; illumination color temperature: 5500K; illumination color index (Ra): 90%
Video Recording System		Built-in 4K video system, 3840*2160 30fps; instant playback function; one-key shooting function
Monitor		27-inch 4K ultra-clear monitor
Bracket System		Floor stand system (including column and base), the maximum net arm span is 1650mm (customizable length)







Tabletop Dissecting Microscope

	Model	Description
Optical Zoom System	MT-D9001	6-step zoom: 0.33x/0.5x/0.83x/1.2x/2x/3x; total magnification: 2.7X/4X/6.1X/9.6X/16X/24X Field of view diameter (large objective lens focal length f=250mm) : 9mm/14mm/22mm/37mm/56mm/83mm
Eyepiece		0-210° continuous adjustable angle binocular tube; large field of view and high eye point eyepiece for a larger field of view
Zoom Objective		Zoom range WD180mm-460mm, large depth of field objective lens
Light Source System		Medical-grade LED light source with continuously adjustable brightness; working life 60,000 hours; minimum illumination on the object surface> 50,000lx; illumination spot diameter: 85mm; illumination color temperature: 5500K; illumination color index(Ra): 90%
Video Recording System		Built-in 4K video system, 3840*2160 30fps; instant playback function; one-key shooting function
Monitor		10 inch HD monitor
Bracket System		Desktop stand system with a maximum net arm span of 1325mm



Anatomical Power System

	Model	Description
Anatomical Power Host	HCL-ZJ	Electrical safety category: typeI, BFClass; AC 110V/220V, 50/60Hz; overload protection function; single-channel output
High-speed General Purpose Motor	HCL-DJ	Can be connected to craniotomy/milling cutter/drilling handle, working speed: 0~50,000RPM; rated power: 60W; maximum power: 80W; torque: >15mNm
Craniotomy Handle	HCL-KL/B	Hand length: 125mm; Working speed: 0~1500 RPM; Torque: > 750m Nm
Milling Cutter Handle	HCL-XD/B	Working speed: 0~50,000RPM
Micro Straight Grinding Handle	HCL-1936/45	short; outer diameter ϕ 6mm; working length: 45mm
	HCL-1936/65	Standard; outer diameter: ϕ 6mm; working length: 65mm
	HCL-1936/85	Long; outer diameter: ϕ 6mm; working length: 85mm
Micro-bend Grinding Handle	HCL-1946/45	short; outer diameter: ϕ 6mm; working length: 45mm
	HCL-1936/65	Standard; outer diameter: ϕ 6mm; working length: 65mm
	HCL-1946/85	Long; outer diameter: ϕ 6mm; working length: 85mm
Endoscope Bend Grinding Handle	HCL-1945/128	Diameter: ϕ 5mm, working length: 128mm, Endoscope transnasal special handle with narrow head end design
Single Foot Switch	HCL-DK	Waterproof grade IPX68; infinitely variable speed

		Model	Description
	Diamond Ball	HC21-1-2.35	Diamond Ball; Work Diameter: Φ 1mm; Reusable; High Hardness Stainless Steel
		HC21-2-2.35	Diamond Ball; Work Diameter: Φ 2mm; Reusable; High Hardness Stainless Steel
		HC21-3-2.35	Diamond Ball; Work Diameter: Φ 3mm; Reusable; High Hardness Stainless Steel
		HC21-4-2.35	Diamond Ball; Work Diameter: Φ 4mm; Reusable; High Hardness Stainless Steel
		HC21-5-2.35	Diamond Ball; Work Diameter: Φ 5mm; Reusable; High Hardness Stainless Steel
	Cutting Ball	HC22-1-2.35	Cutting Ball; Work Diameter: Φ 1mm; Reusable; High Hardness Stainless Steel
		HC22-2-2.35	Cutting Ball; Work Diameter: Φ 2mm; Reusable; High Hardness Stainless Steel
		HC22-3-2.35	Cutting Ball; Work Diameter: Φ 3mm; Reusable; High Hardness Stainless Steel
		HC22-4-2.35	Cutting Ball; Work Diameter: Φ 4mm; Reusable; High Hardness Stainless Steel
		HC22-5-2.35	Cutting Ball; Work Diameter: Φ 5mm; Reusable; High Hardness Stainless Steel
	Perforator	HC23-KL/TI	Perforator; 11/7mm; Reusable; High Hardness Stainless Steel
		HCL-KL/TM	Perforator; 13/9mm; Reusable; High Hardness Stainless Steel
	Craniotomy Adaptor	HCL-XD/P	Craniotomy Adaptor: Φ 1.8-2.4mm; Reusable; High Hardness Stainless Steel

HOTRY® NEUROSURGERY LABORATORY SOLUTIONS

Global Marketing Manager:

Tel: +86 156 0075 3360

E-mail: menghan@hotryneuro.com

R&D Center: HOTRY Medical, 3rd Floor, Building 21, LIANDONGU

VAL-LEY, No.50 Huatuo Road, Daxing District, Beijing, China