

HOTRY 1080P Full HD Integrated Neuroendoscopy System YKD-9101



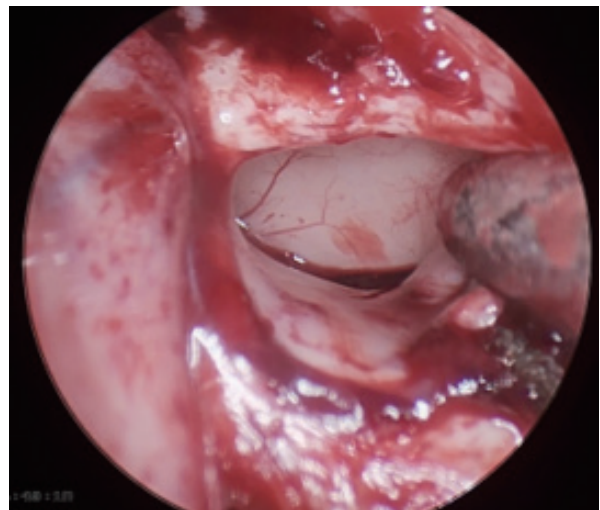
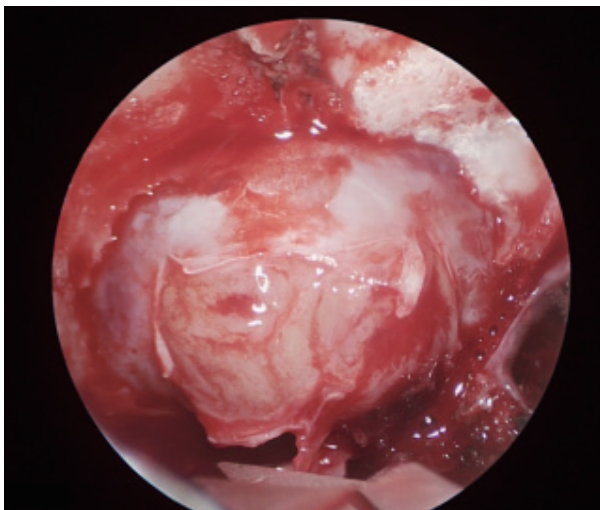
Main Machine Model for Transnasal Pituitary Tumor

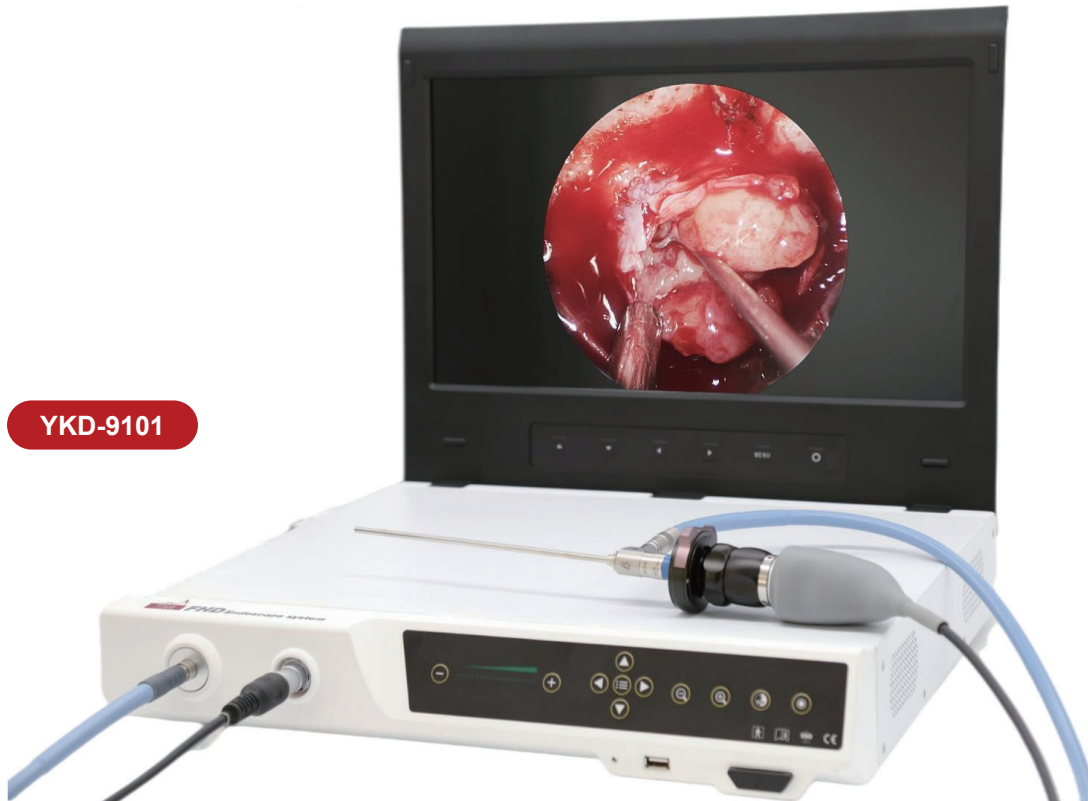
- 1920*1080P high-definition imaging
- Currently widely used in the fields of transnasal sphenoid and ventriculscopy
- FHD super sampling 2.5K vision and true color reproduction, don't miss every detail
- Support multiple screens, 0 delay HD output
- Small size, one-key boot, quickly start neurosurgery endoscopic surgery

Full HD Integrated Neuroendoscopy System



- Digital full HD camera handle
- 2.5 times lossless zoom magnification function





YKD-9101

- Portable Mode: quick start, essential for consultation



- Super Sampling 1080 output, accurate presentation of each lesion
- Assistant can watch the portable screen and operate accurately

Technical Parameters of HOTRY 1080P Full HD Integrated Neuroendoscopy System

Product Name: HOTRY 1080P Full HD Integrated Neuroendoscopy System

Model: YKD-9101

Host

- Integrated design of camera system, light source system and monitor to reduce space limitations
- *Preset professional screen adjustment, ready to use after booting, saving precious time
- Multiple 4K monitors can be connected to display the ultimate intracranial image

Built-in Image Processing System

- **Output pixels:** 2.1 million pixels
- **Horizontal resolution:** 1080 lines
- **Scanning system:** progressive scan
- **Image size:** 1920*1080
- **Output frame rate:** (1920*1080) 60P
- **Recording and direct acquisition:** USB3.0*1 supports direct acquisition of high-definition surgical video
- ***Image function:** blood vessel optimization function, dark part balance function, automatic gain function, etc.
- ***Output interface:** HDMI, DVI, CVBS

Built-in Cold Light Source System

- ***Dimming:** 20 levels of intensity display
- **Light source power:** 80W
- **Light source intensity:** ≥5 million Lux (light source interface output)
- **LED lamp working life:** ≥50000 hours
- **Light source interface:** Wolf brand (WOLF), Smith
- **Light guide:** Φ4*3000mm, resistant to high temperature and high pressure

Camera Handle Part

- **Imager:** 1/2.8 CMOS optical kit
- **Optical bayonet:** international standard C-type bayonet, can be connected to imported domestic hard scope, fiber soft scope
- **Camera cable length:** 2.5M
- **Zoom range:** F18-F35
- ***Camera handle function:** capture/video, one-key white balance

*Built-in Monitor Part

- ***Built-in monitor resolution:** 1080 lines
- ***Built-in monitor size:** 19 inches
- **Built-in high-definition monitor screen ratio:** 16:9
- **Built-in monitor image size:** 1920*1080
- **Frame rate:** (1920x1080) 60p

Environmental Requirements:

- **Signal-to-noise ratio:** above 50dB
- **Working temperature/humidity:** -10°C~+50°C/20%~90%RH
- **Storage temperature/humidity:** -10°C~+50°C/20%~95%RH

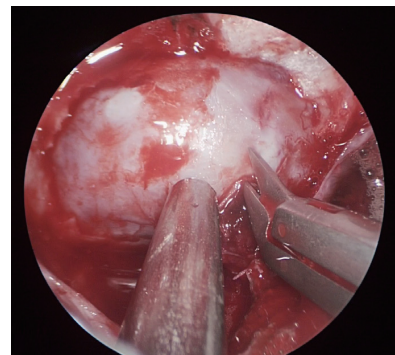
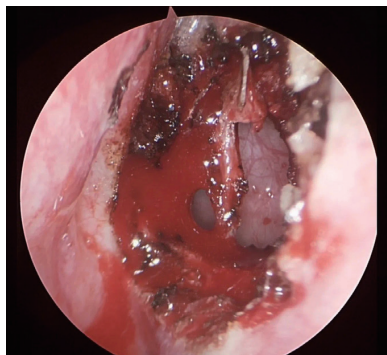
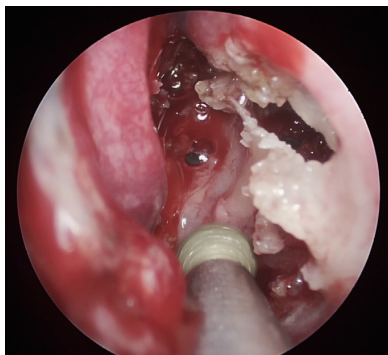
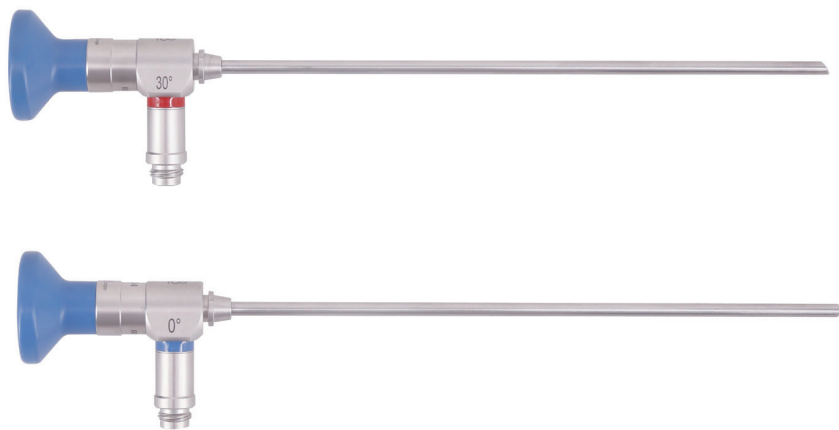
Endoscope

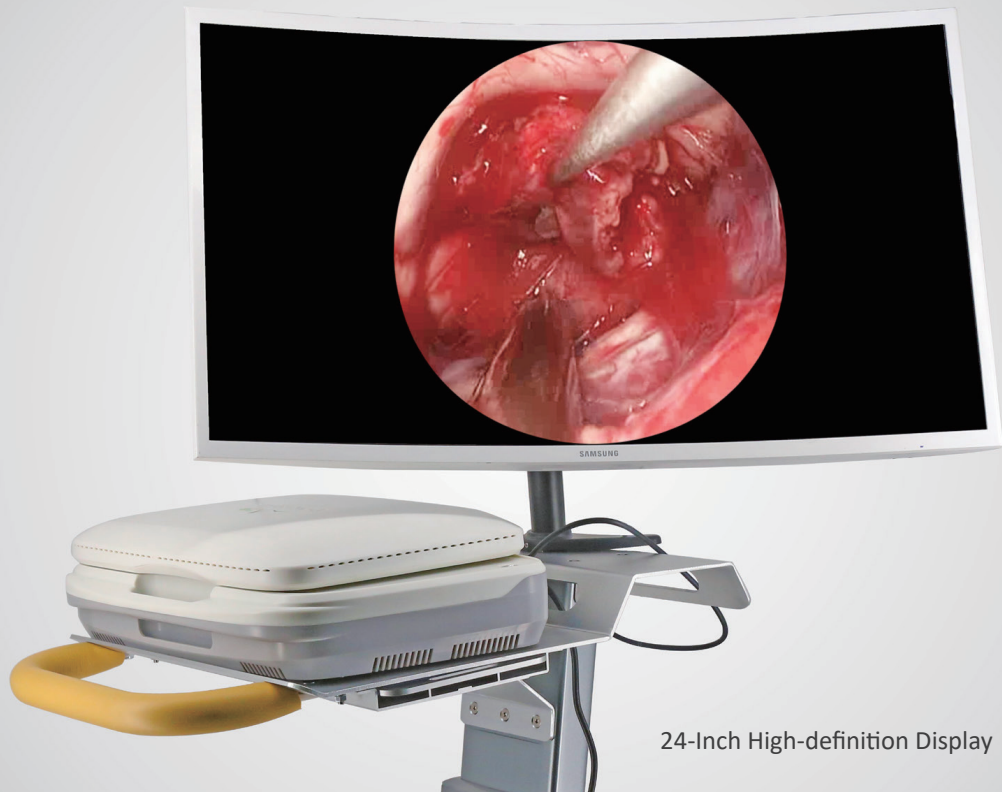
- ***0° endoscope:** Φ4mm, working end length 175mm, T-coated, high-definition scope body
- ***30° endoscope:** Φ4mm, working end length 175mm, T-coated, high-definition scope body

HD Neuroendoscope

- High-definition lens body, clear surgical field, no need to say more.
- The blessing of advanced coating technology, reduce the fogging in the operation, high brightness and strong transparency.
- Ultra-high color reproduction, vivid images without distortion.

0° 4mm x 175mm
30° 4mm x 175mm





24-Inch High-definition Display



Endoscope Trolley



Multifunctional Medical Trolley

- Good combination and variability, each part can be combined arbitrarily according to functional needs
- Made of excellent steel, the product is more durable
- Easy to assemble, small packaging volume, easy to transport
- Adjustable shelf height



Hotry (Beijing) Co.,Ltd.

HOTRY Medical, 3rd Floor, Building 21, LIANDONGU VALLEY, No.50 Huatuo Road, Daxing District, Beijing,China

Tel: +86 15600753360

E-mail:menghan@hotryneuro.com

www.Hotryneuro.com

This brochure is a global unified template. For actual use in each region, please refer to the scope of local de daration of conformity.